

DEVELON FLEET MANAGEMENT

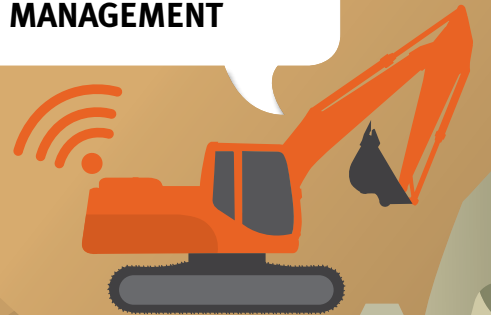
Telematics Service



**JOB SITE
MANAGEMENT**



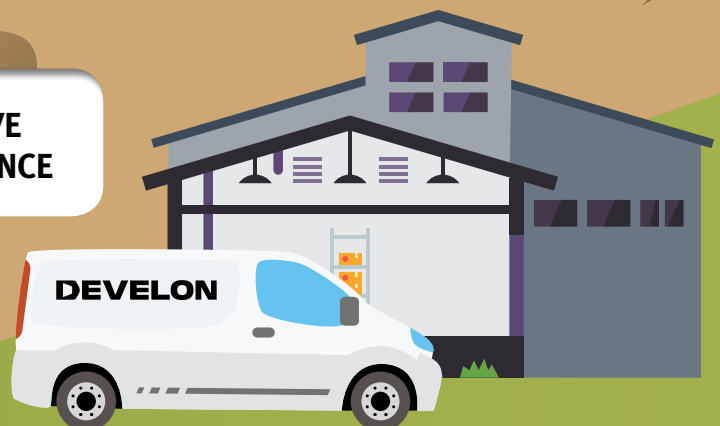
**WORK EFFICIENCY
MANAGEMENT**

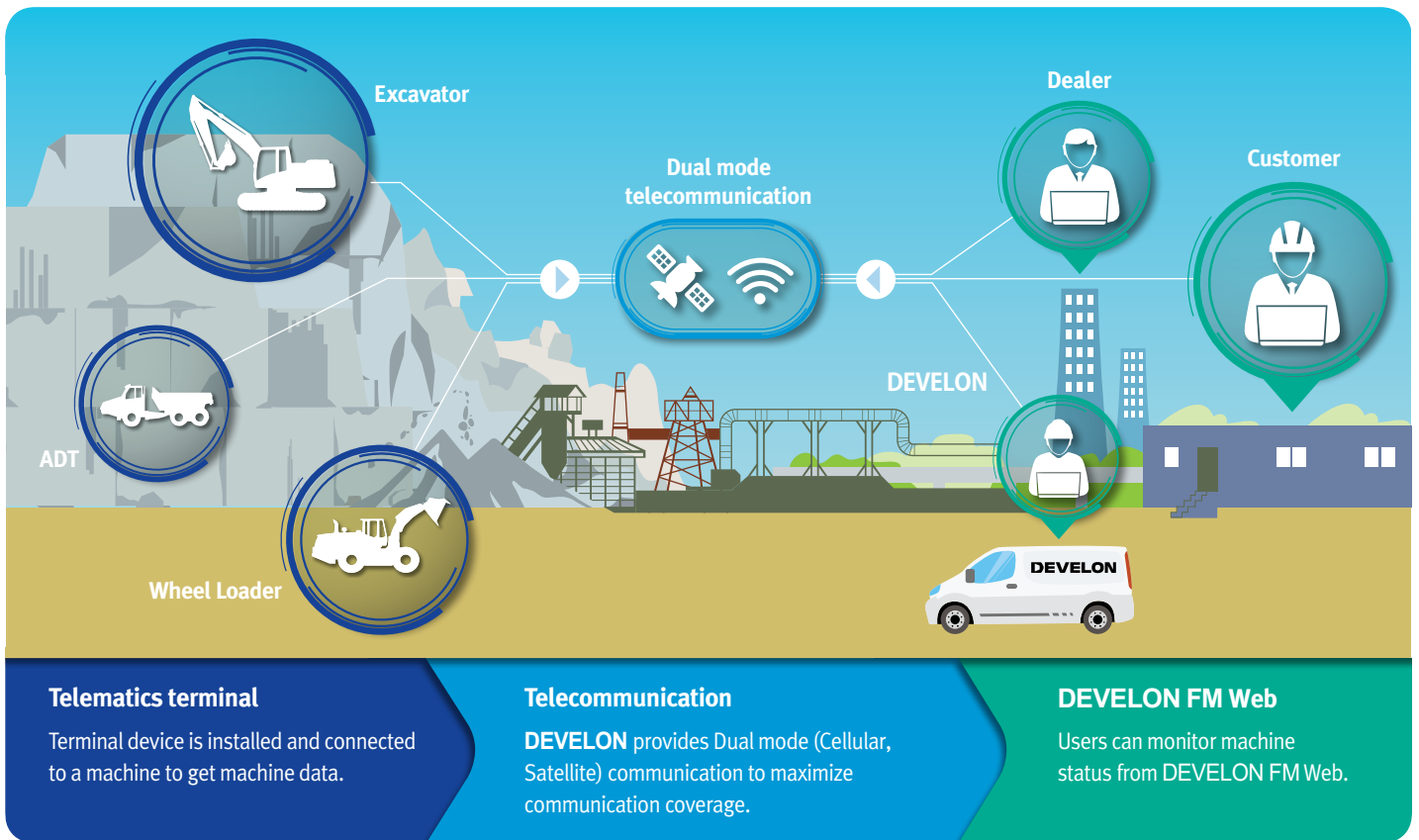


**PROACTIVE
SERVICE**



**PREVENTIVE
MAINTENANCE**





Telematics terminal

Terminal device is installed and connected to a machine to get machine data.

Telecommunication

DEVELON provides Dual mode (Cellular, Satellite) communication to maximize communication coverage.

DEVELON FM Web

Users can monitor machine status from DEVELON FM Web.

Benefits

JOB SITE MANAGEMENT



Functions

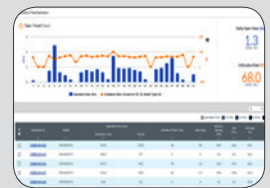
LOCATION

- GPS
- Geo-fence



REPORTS

- Periodic operation report
- Utilization

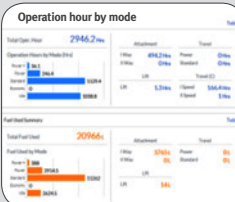


WORK EFFICIENCY MANAGEMENT



OPERATION TREND

- Total operation hour
- Operation hour by mode



FUEL EFFICIENCY*

- Fuel level
- Fuel consumption



PREVENTIVE MAINTENANCE



FILTER & OIL MANAGEMENT

- Preventive maintenance by item replacement cycle

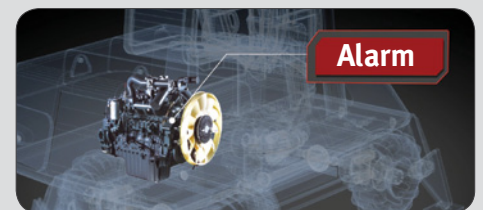


PROACTIVE SERVICE



Warning & Alert

- Detect machine warnings
- Antenna disconnection
- Geo/Time fence



* Functions may not be applied to all models. Please contact your sales representative to get more information of the service.